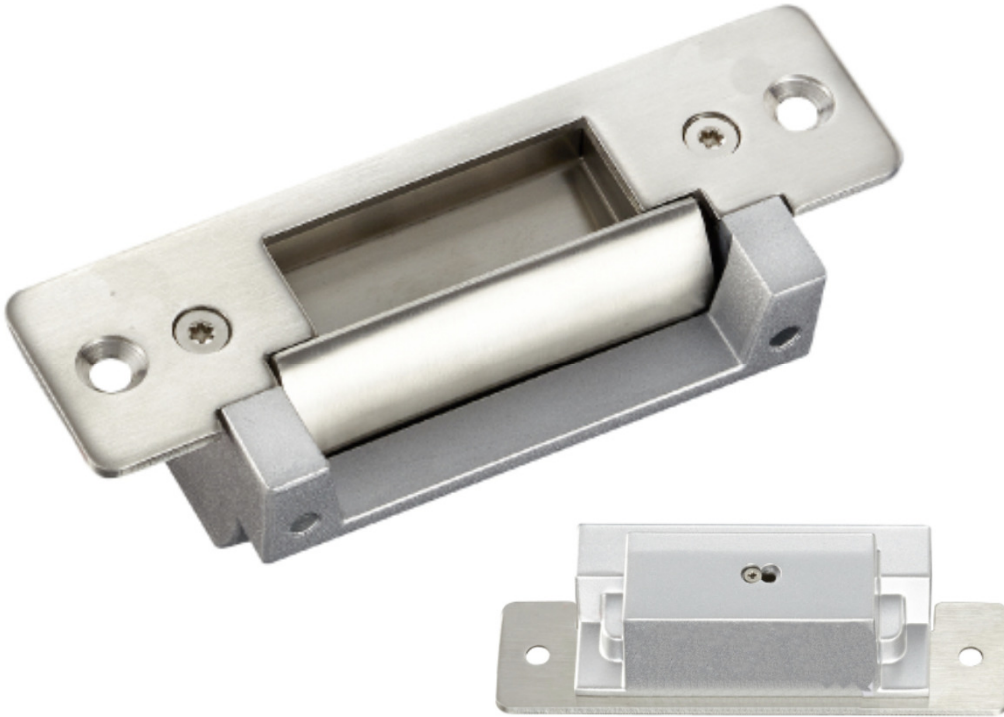


## ES-760 Electric Strike



### Technical Specifications :

<b>Dimensions:</b>	124L x 43.7W x 35H (mm)
<b>Holding Force:</b>	1300 KG
<b>Voltage:</b>	DC 12V 320mA
<b>Current:</b>	250mA
<b>Suitable For:</b>	Wooden door, PVC door, Metal door
<b>Function:</b>	Built-out MOV NC (Fail safe) / NO (Fail secure) Changeable
<b>Open Mode:</b>	90 Degees swinging door
<b>Operating Temp:</b>	-10~+25°C (14-131F)
<b>Surface Temp:</b>	Within +20°C
<b>Face Plate Material:</b>	Painted steel
<b>Bolt Material:</b>	Stainless steel
<b>Weight:</b>	0.4kgs